
Sitting Pretty



Replacing the Essential and Heritage Collection

LC150


Genesis Collection

Small	MSRP: 1189.00	MAP: 899.00
Medium	MSRP: 1479.00	MAP: 999.00

LC435

Evolution Collection

Small:	MSRP: 1689.00	MAP: 1289.00
Medium:	MSRP: 1699.00	MAP: 1299.00
Large:	MSRP: 1759.00	MAP: 1319.00
XL:	MSRP: 2949.00	MAP: 2349.00
XXL:	MSRP: 3199.00	MAP: 2549.00



Sitting Pretty **LC-150 WARRANTY**

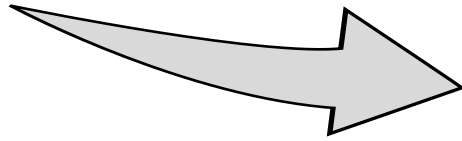
TWO-YEAR LIMITED WARRANTY

For two (2) years from the date of purchase, Pride will repair or replace at our option to the original purchaser any of the following parts found upon examination by an authorized representative of Pride to be defective in material and/or workmanship. Any warranty claims for electronic assemblies may become void if damage results from the use of parts/accessories that are not Pride original parts and are not purchased through an authorized Pride provider:



Current LC105

FDA Class II
Medical Device*



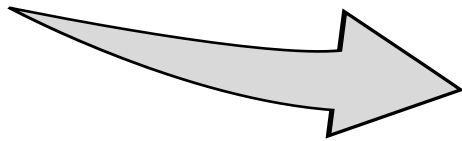
LC150
Genesis Collection

LC150
Small
325lbs
Capacity



Current LC250

FDA Class II
Medical Device*



LC150
Medium
325lbs
Capacity

Comfort & Smart Features:

- Traditional 3 Position-Single motor chair
- Steel Seat Box
- Magnetic Handcontrol holder on both arms
- Handcontrol connector in both pockets
- No USB on Chair or Hand Control
- Chaise Pad Design Fully Supports Legs
Eliminating Pressure Points
- 325lbs Capacity

Sophie

Soft Chanel fabric with timeless elegance color



Latte



Shale



Sapphire



Cabernet

Lexis Vinal (Upcharge)



Chestnut

	Depth	Seat to Floor	Width	Top of Back to Seat
Small	18	18	20	24
Med	20	20	22	26

Accessories:

- Arm and Headrest covers
- Lithium Battery Back Up
- Leg Levelers
- Cleaning Kit



Simple Toggle Switch Hand Control

Sitting Pretty LC-435 WARRANTY

LIFETIME WARRANTY

Pride offers a lifetime warranty on the lift and recline mechanisms. Pride warrants that the lift and recline mechanisms and chair frame on your lift chair will be free from defects under normal use and service for as long as the chair is in use by the original owner. This lifetime warranty covers the lift and recline mechanisms against metal fatigue, defective welds, and bushings.

NOTE: Pride reserves the right to replace only the part of the lift and recline mechanism, scissor(s) or chair frame that may be defective from workmanship. Misuse and/or abuse are excluded from warranty.

SEVEN-YEAR PRO-RATED LIMITED WARRANTY

For the first four (4) years from the date of purchase, Pride will repair or replace at our option to the original purchaser any of the following parts found upon examination by an authorized representative of Pride to be defective in material and/or workmanship:

- Motor
- Hand Control
- Transformer/Control Box

For three (3) additional years, a pro-rated warranty will be made available for the following parts:

- Motor
- Hand Control
- Transformer/Control Box

Pride will warrant these components with the following pro-rated schedule:

- **Fifth year:** 25% off suggested retail price
- **Sixth year:** 15% off suggested retail price
- **Seventh year:** 5% off suggested retail price

WARRANTY EXCLUSIONS

This warranty does not extend to fabric.

Pride is not responsible or obligated to pay for labor, service calls, shipping, and/or any other charges incurred for repair of the product. All transportation costs and shipping damage incurred while submitting parts for repair or replacement are the responsibility of the purchaser. Please contact your authorized Pride provider for information on the current cost associated with a service visit.

- Circumstances beyond the control of Pride
- Labor, service calls, shipping, and other charges incurred for repair of the product, unless specifically authorized, IN ADVANCE, by Pride
- Repairs and/or modifications made to any part without specific consent from Pride

Exclusions also include components with damage caused by:

- Contamination
- Abuse, misuse, accident, or negligence
- Battery fluid spillage or leakage
- Improper operation, maintenance, or storage
- Commercial use or use other than normal

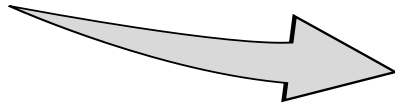
IMPLIED WARRANTIES

Implied warranties, including those of merchantability and fitness for a particular purpose, are limited to one (1) year from the date of purchase and to the extent permitted by law. Any and all other implied warranties are excluded. This is the exclusive remedy. Liabilities for consequential damages under any and all warranties are excluded. Some states do not allow limitations on how long an implied warranty lasts or do not allow the exclusion or limitation of incidental or consequential damages. The above limitation or exclusion may not apply to you. This warranty gives you specific rights, and you may also have other rights which vary from state to state.



Current LC358

FDA Class II
Medical Device*



LC435
Evolution Collection



Comfort & Smart Features:

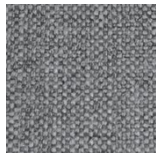
- Enhanced 3 Position-Single motor chair with all-in-one lift frame and scissor mech that allows the feet to fully rise before the back moves.
- Steel Seat Box
- Foot Extension
- Self-Leveling Cup Holder in Arm
 Small, Medium and Large only
- Storage in the Arm
- **Pocketed Coil Springs in the seat**
- Zipper access on the arms, back rest and seat
- USB and USB-C Charging Port in Arm
- **Magnetic Handcontrol holder on both arms**
- **Hand Control connector in both pockets**
- Chaise Pad Design Fully Supports Legs
 Eliminating Pressure Points
- Sizes (Small, Medium, Large)
 - Small 400lbs
 - Medium 400lb
 - Large 400lbs

Cosi

Plush velvet with beautiful classic denim overprint



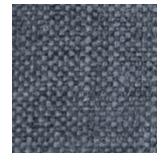
Mocha



Gravel



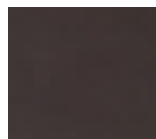
Syrah



Blue Diamond

	Depth	Seat to Floor	Width	Top of Back to Seat
Small	18	18	20	24
Med	20	20	22	26
Large	22	21	24	28

Sta-Kleen



Chestnut

Upgrade

Accessories:

- Arm and Headrest Covers
- Lithium Battery Back Up
- Leg Levelers
- Cleaning Kit



Self Leveling Cup Holder



Storage in the arm

USB & USB-C now on the arm



Feet extend fully before the back moves



Magnets on both arms to secure hand control

Zipper Access in the Arms, back rest and seat

Pocketed coil springs in the seat

Steel Seat Box and scissor mech all in one

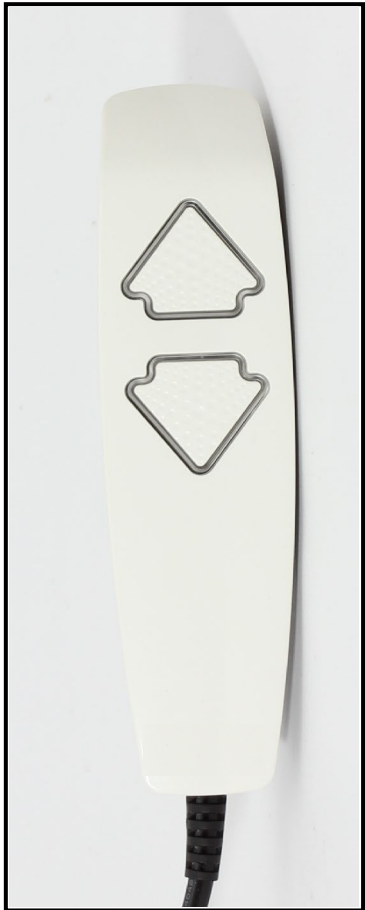
Footrest Extension

Hand control connection in both right and left pockets



Simple Toggle Switch Hand Control

Original White 2
Button
Hand Control
With USB



XL & XXL

Made in the USA



Comfort & Smart Features:

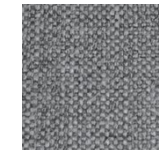
- 3 Position - 2 motor chair working in sync
- Steel Seat box
- Standard Lithium Battery Back Up
- Original White 2 button Hand control with USB
- Chaise Pad Design Fully Supports Legs
Eliminating Pressure Points
- XL 500lbs MSM Build (Mississippi)
- XXL 600lbs MSM Build (Mississippi)
- No Cup Holder
- No Storage in the arm
- No Magnets on the arms

Cosi

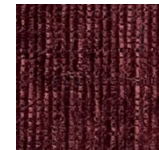
Plush velvet with beautiful classic denim overprint



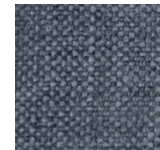
Mocha



Gravel



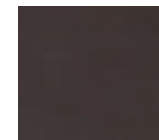
Syrah



Blue Diamond

(Syrah & Blue Diamond)
Not available on the XXL

Sta-Kleen



Chestnut

Upcharge

	Depth	Seat to Floor	Width	Top of Back to Seat
XL	22	20	26	29
XXL	22	20	30	29